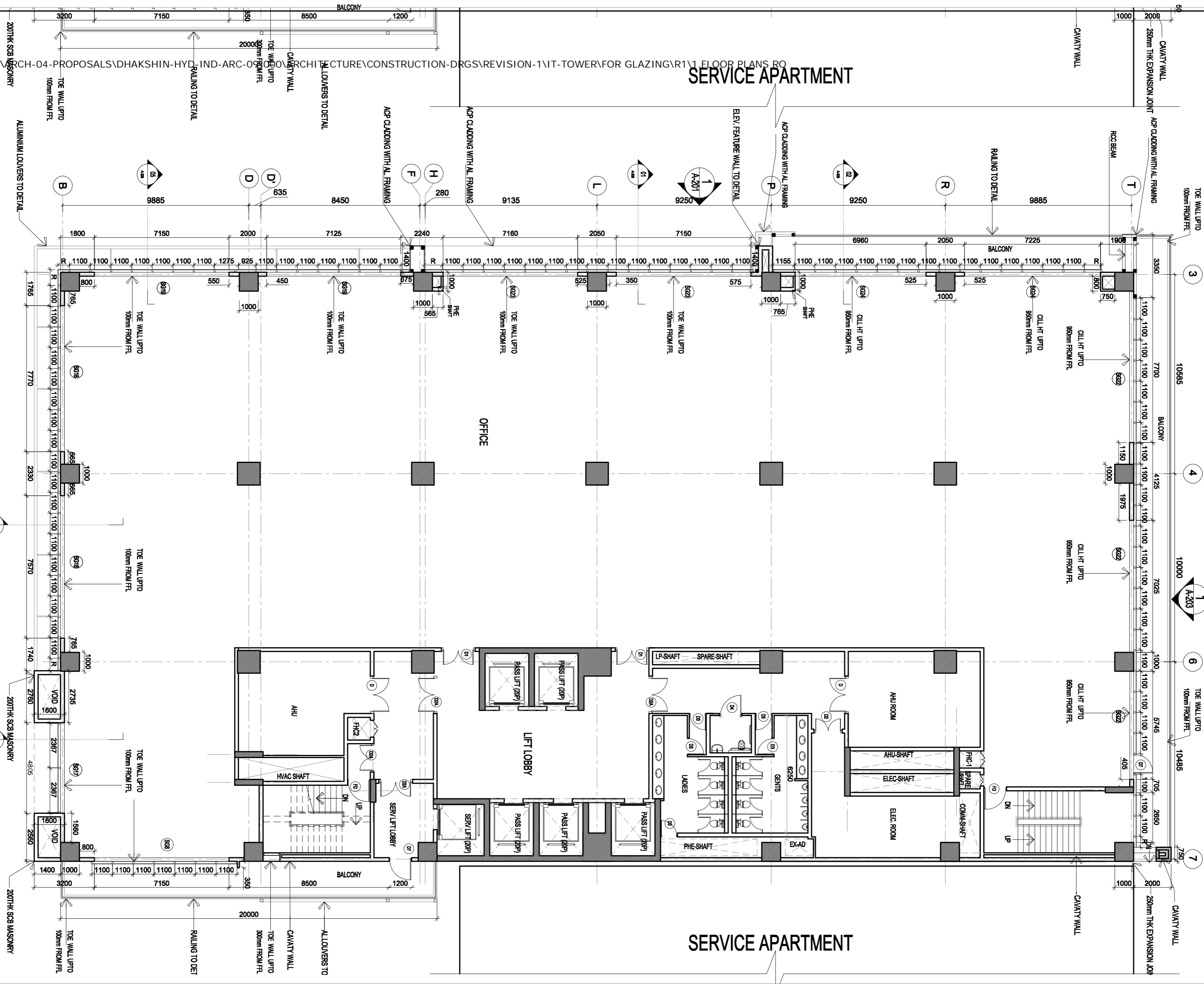


\\BLRSRV02\ARCHITECTURE\PROPOSALS\DAKSHIN-HYD-IND-ARC-05\000\ARCHITECTURE\CONSTRUCTION\DRGS\REVISION-1\IT-TOWER\FOR GLAZING\R1\1 FLOOR PLANS

PRINTED ON: 24.03.2010

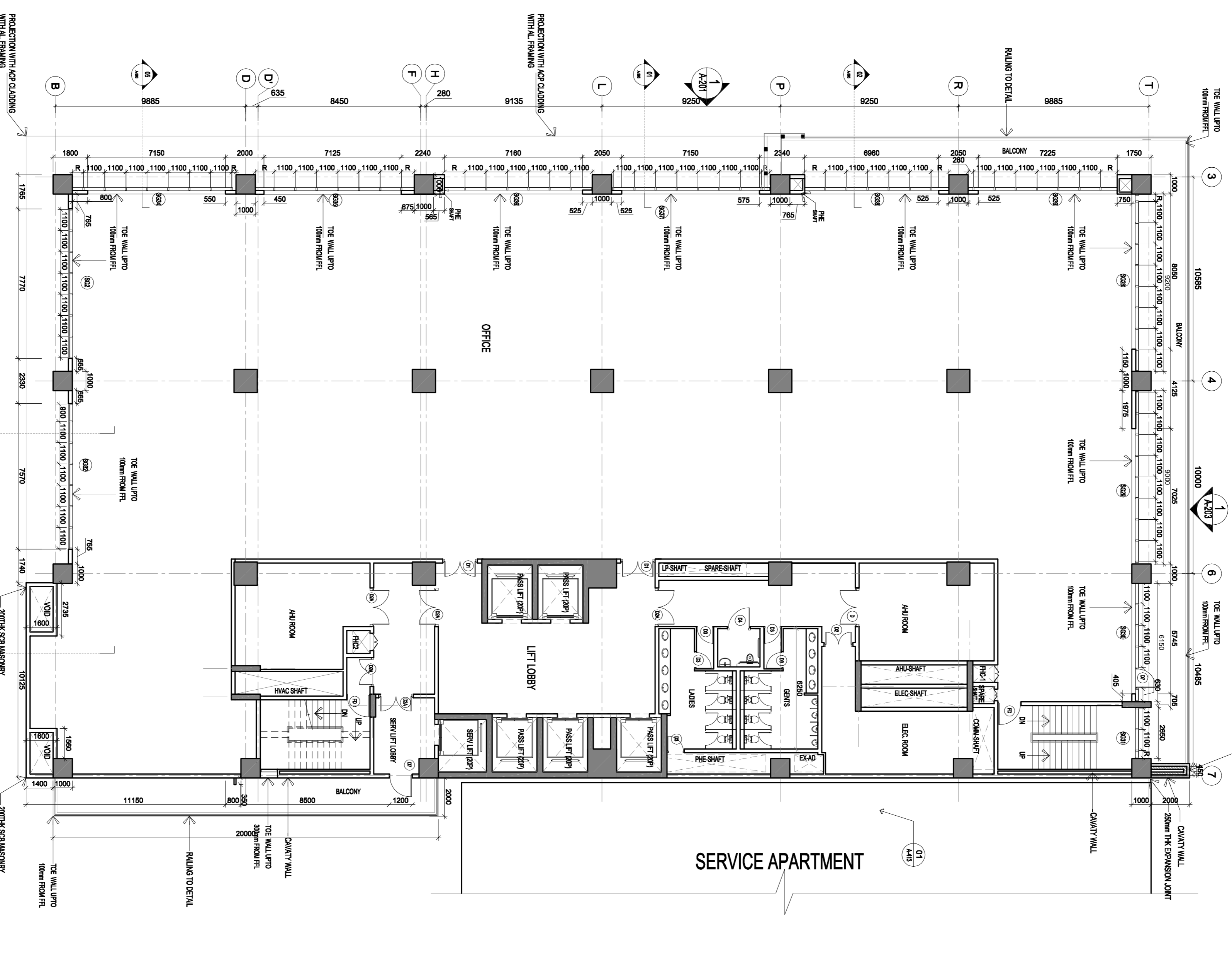
### SERVICE APARTMENT



1 13TH FLOOR PLAN  
A38 SCALE: 1/8" = 1'-0"



### SERVICE APARTMENT



2 17TH FLOOR PLAN  
A38 SCALE: 1/8" = 1'-0"



### SERVICE APARTMENT

FOR CONSTRUCTION	
R1	BALCONY EXTENSIONS
R1	DESCRIPTION
	DATE

CLIENT :  
DAKSHIN INFRASTRUCTURE PVT LTD  
PLOT NO 6, ANUPURAM EXTENSION,  
HYDERABAD -500062

PROJECT :  
KAPIL TOWERS, IT & SERVICE APARTMENTS AT GACHIBOWLI, HYDERABAD

TITLE :  
IT BLOCK  
13, 17TH FLOOR PLAN

JOB NO: 09-019 DWG NO: A-104 REV: R1  
SCALE: 1/150 DRAWN BY: TASHI  
DATE: 14-07-11 CHKD BY: NARAYAN

PROJECT MANAGERS  
KAPIL ENGINEERS & INFRASTRUCTURES PVT LTD.  
PLOT NO 6, ANUPURAM EXTENSION,  
HYDERABAD -500062  
PHONE: 500062  
FAX:

MERS CONSULTANT  
DesignTree Service  
Consultants Pvt Ltd  
Consulting Engineers  
# 7 Laksh Narasimha Complex, 15th  
Cross 100 Feet Road & Phase, J.P Nagar,  
Bangalore 560 078 INDIA 91894125479  
EMAIL: info@designtreeconsultants.com



SPACE MATRIX  
Space Matrix Design Consultants Pvt Ltd  
No. 1 St. Marks Road, Bangalore 560001, India  
Toll: [+91] 80 4049 4000 FAX: [+91] 80 4049 4299  
www.spacematrix.com

Contractors, vendors & consultants must verify all dimensions on site and notify this Company any discrepancies prior to carry out any work. The Company shall not be responsible for any errors or omissions. Space Matrix Design Consultants Pvt Ltd reserves copyright on this drawing.

